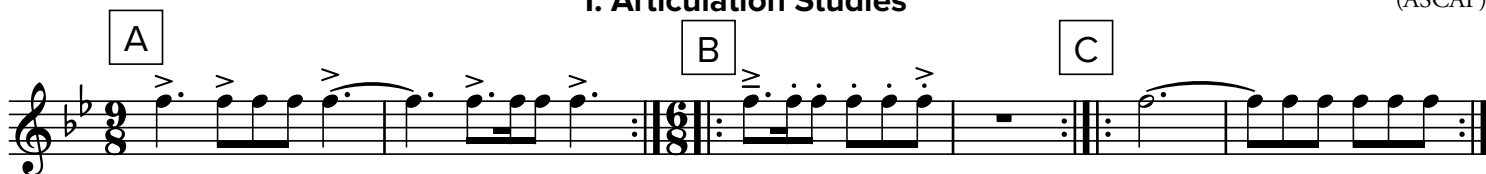


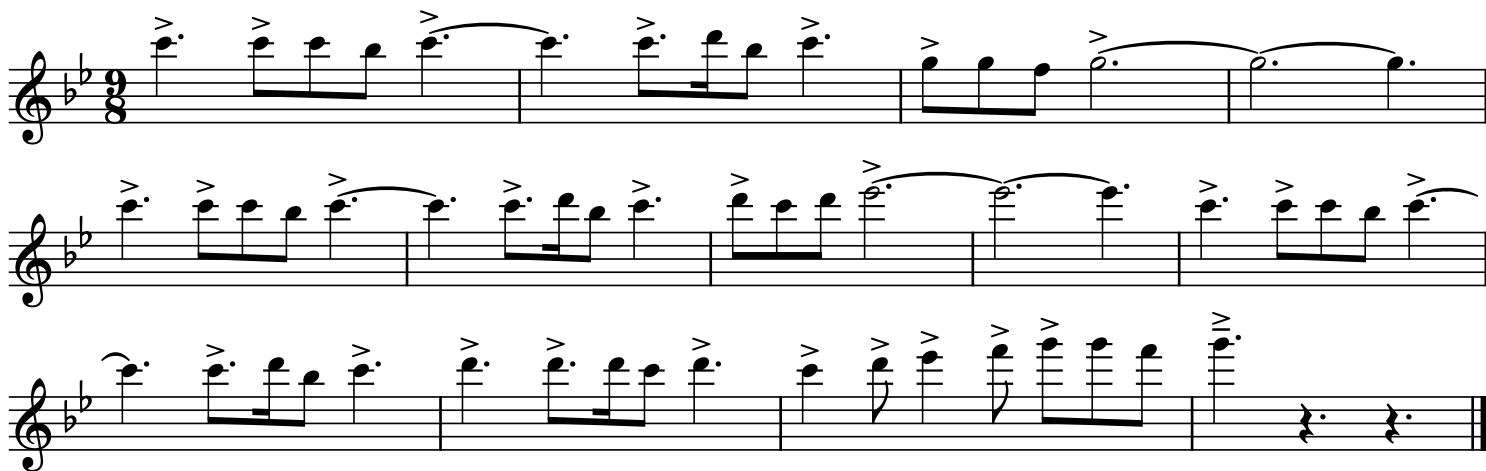
LEADING STAR (FANFARE): *Repertoire Companion Guide*

Tyler S. Grant
(ASCAP)

1. Articulation Studies



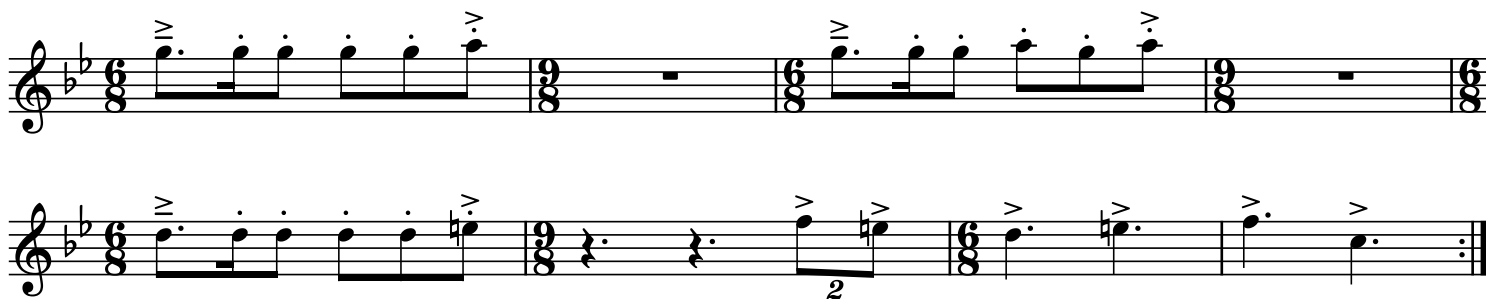
2. Main Theme



3. Motif in Fifths



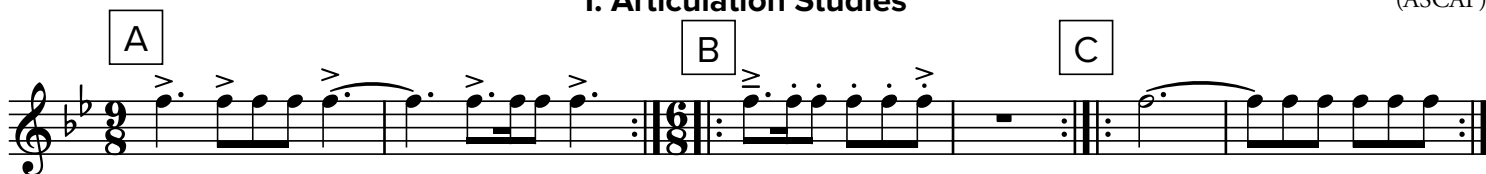
4. B Section Theme



LEADING STAR (FANFARE): *Repertoire Companion Guide*

Tyler S. Grant
(ASCAP)

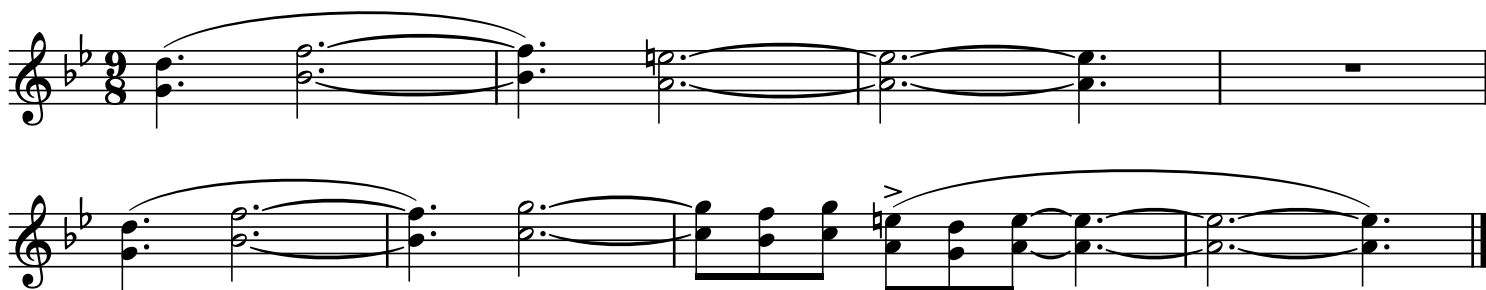
1. Articulation Studies



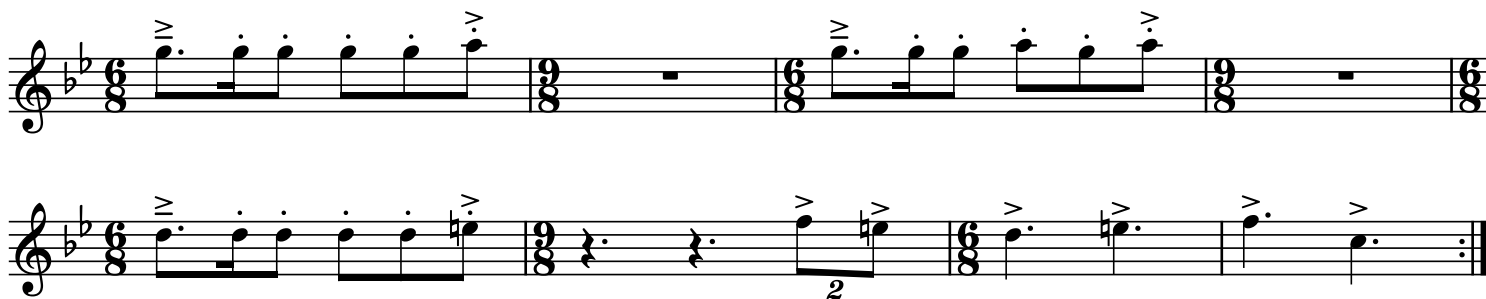
2. Main Theme



3. Motif in Fifths



4. B Section Theme



LEADING STAR (FANFARE): *Repertoire Companion Guide*

Tyler S. Grant
(ASCAP)

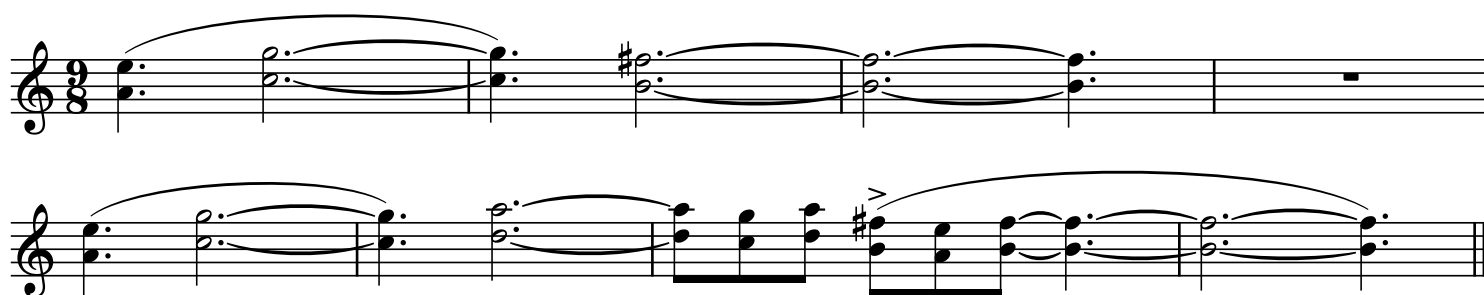
1. Articulation Studies



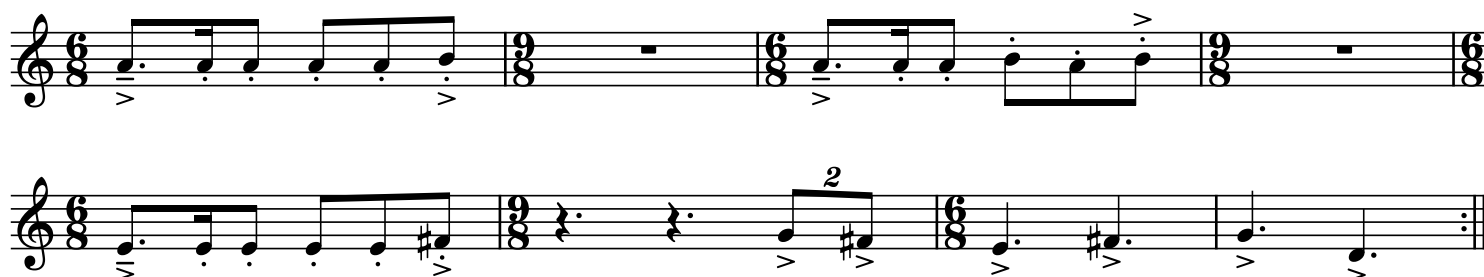
2. Main Theme



3. Motif in Fifths



4. B Section Theme



LEADING STAR (FANFARE): *Repertoire Companion Guide*

Tyler S. Grant
(ASCAP)

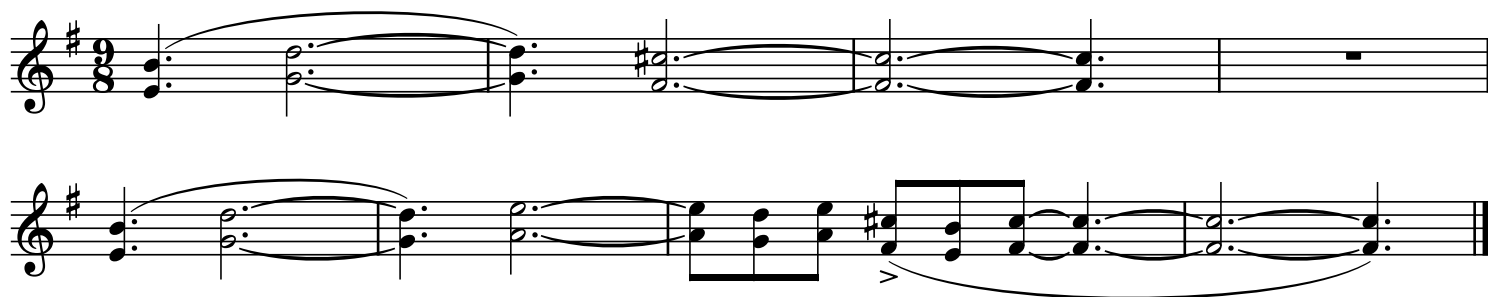
1. Articulation Studies



2. Main Theme



3. Motif in Fifths



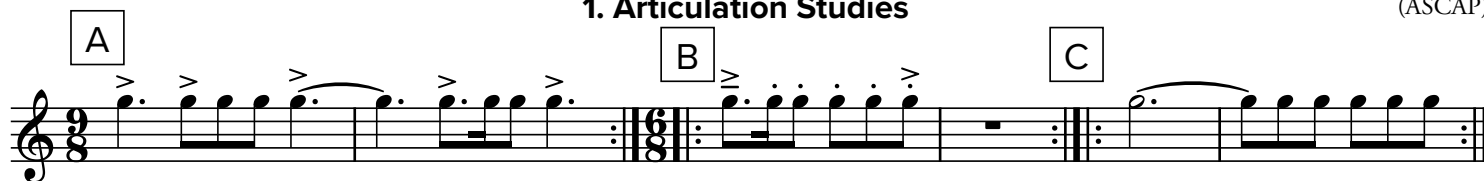
4. B Section Theme



LEADING STAR (FANFARE): *Repertoire Companion Guide*

Tyler S. Grant
(ASCAP)

1. Articulation Studies



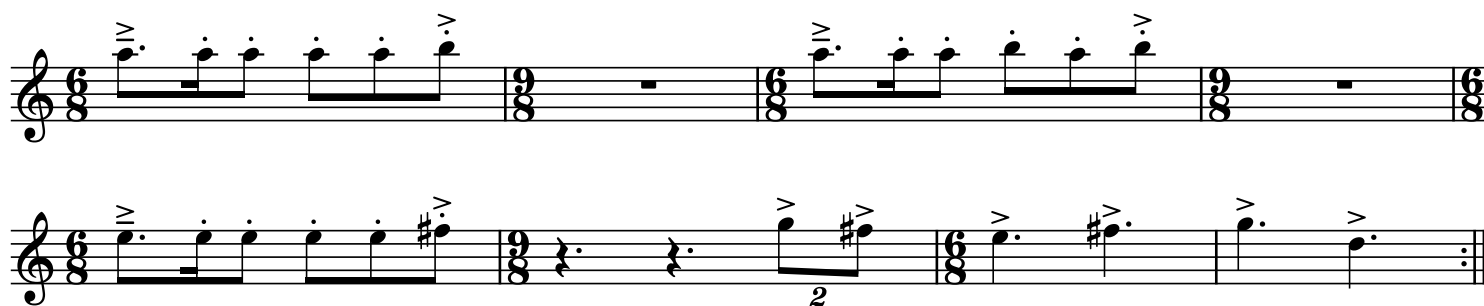
2. Main Theme



3. Motif in Fifths



4. B Section Theme



Trumpet in B ♭ / Euphonium T.C.

LEADING STAR (FANFARE): *Repertoire Companion Guide*

Tyler S. Grant
(ASCAP)

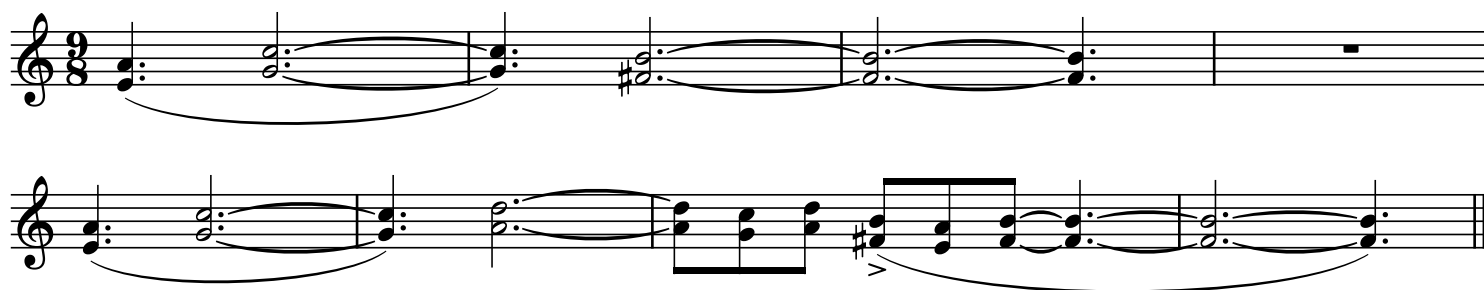
1. Articulation Studies



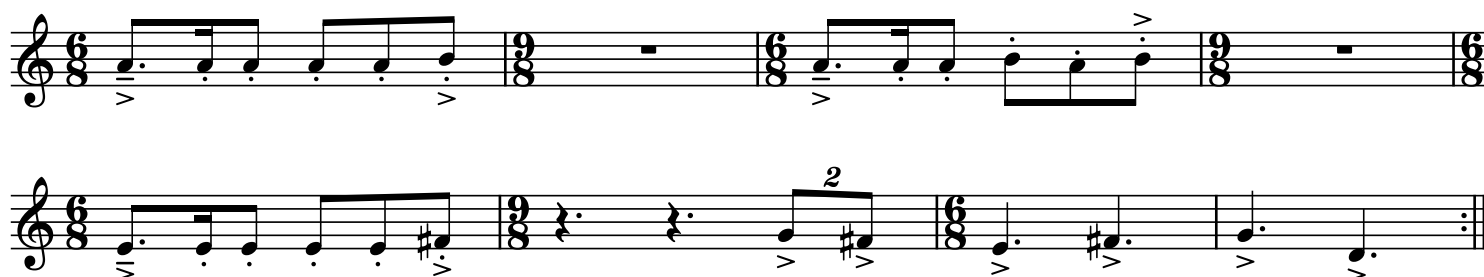
2. Main Theme



3. Motif in Fifths



4. B Section Theme



Copyright © 2024 Tyler S. Grant.

International Copyright Secured. For educational use only. Not for commercial use.

NOTICE: The music, text, graphics, and design of this publication are protected under copyright law.

Any unauthorized duplication is strictly prohibited.

Listen to
the piece
HERE!



LEADING STAR (FANFARE): *Repertoire Companion Guide*

Tyler S. Grant
(ASCAP)

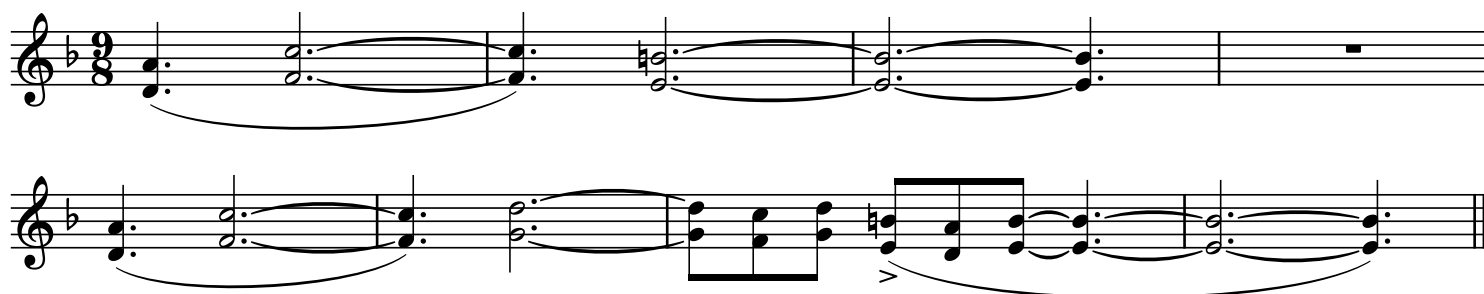
1. Articulation Studies



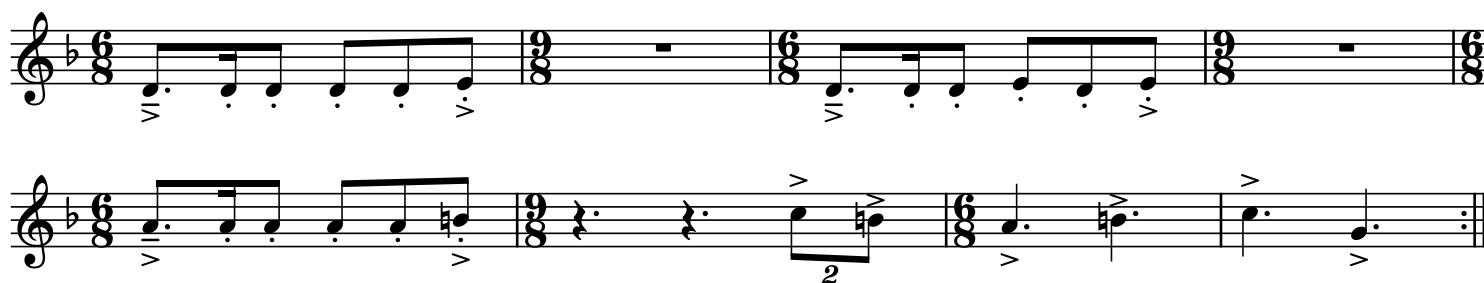
2. Main Theme



3. Motif in Fifths



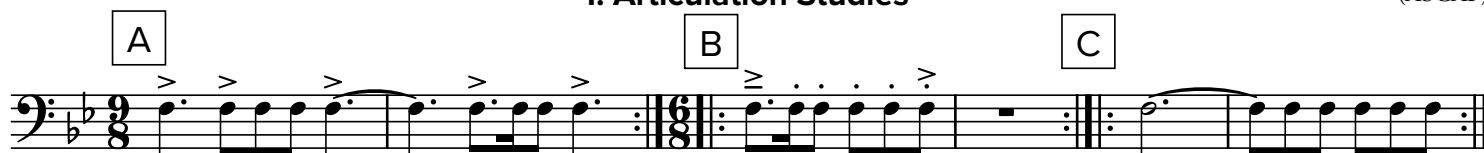
4. B Section Theme



LEADING STAR (FANFARE): *Repertoire Companion Guide*

Tyler S. Grant
(ASCAP)

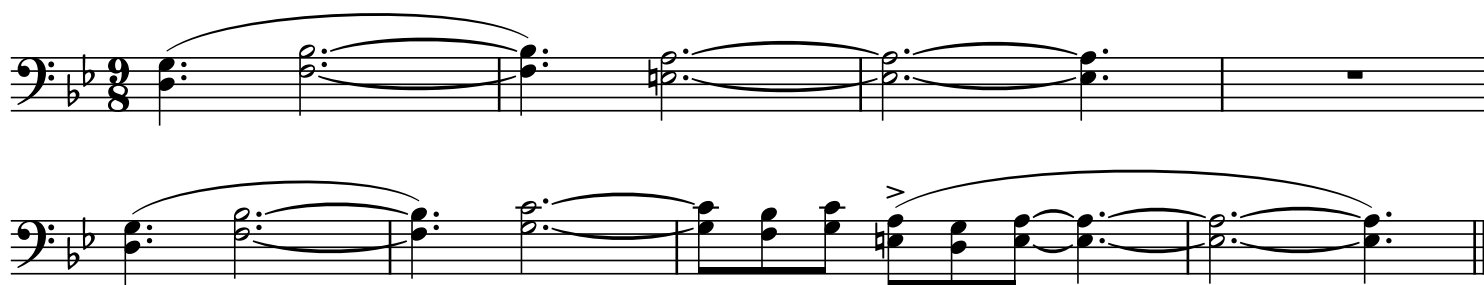
1. Articulation Studies



2. Main Theme



3. Motif in Fifths



4. B Section Theme



2. Main Theme

3. Motif in Fifths

The image displays two staves of musical notation for a piece in 3/8 time. The key signature has one flat (B-flat). The first staff contains measures 1-4, and the second staff contains measures 5-8. The notation includes various note values, rests, and phrasing slurs.

4. B Section Theme

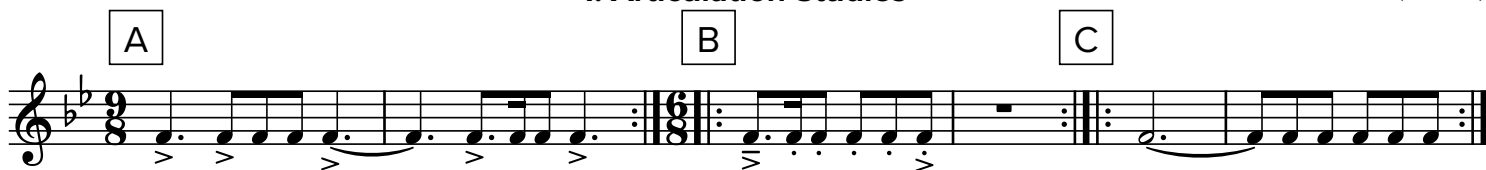
The image shows a musical score for the song "The Rose Tree". It consists of two staves, both in bass clef with a key signature of one flat (B-flat). The time signature is 6/8. The first staff contains the first line of the melody, starting with a quarter note G2, followed by eighth notes A2, Bb2, C3, D3, and E3. The second staff contains the second line of the melody, starting with a quarter note G2, followed by eighth notes A2, Bb2, C3, D3, and E3. The score is written in a simple, clear font.



LEADING STAR (FANFARE): *Repertoire Companion Guide*

Tyler S. Grant
(ASCAP)

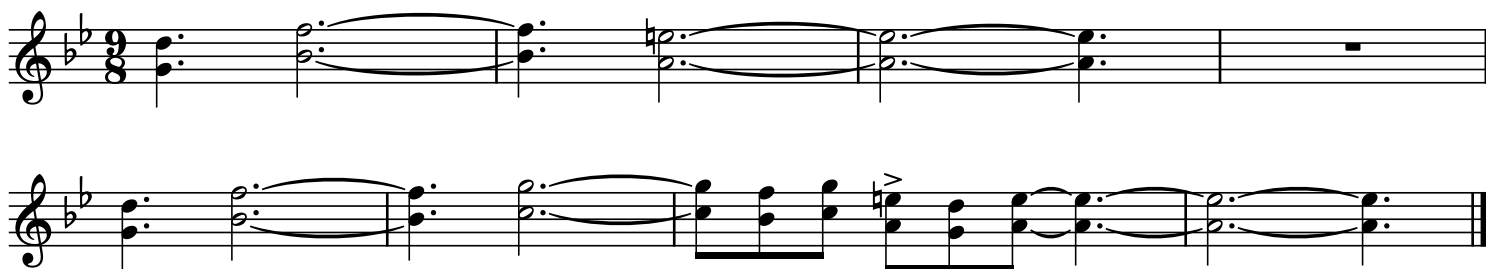
1. Articulation Studies



2. Main Theme



3. Motif in Fifths



4. B Section Theme

